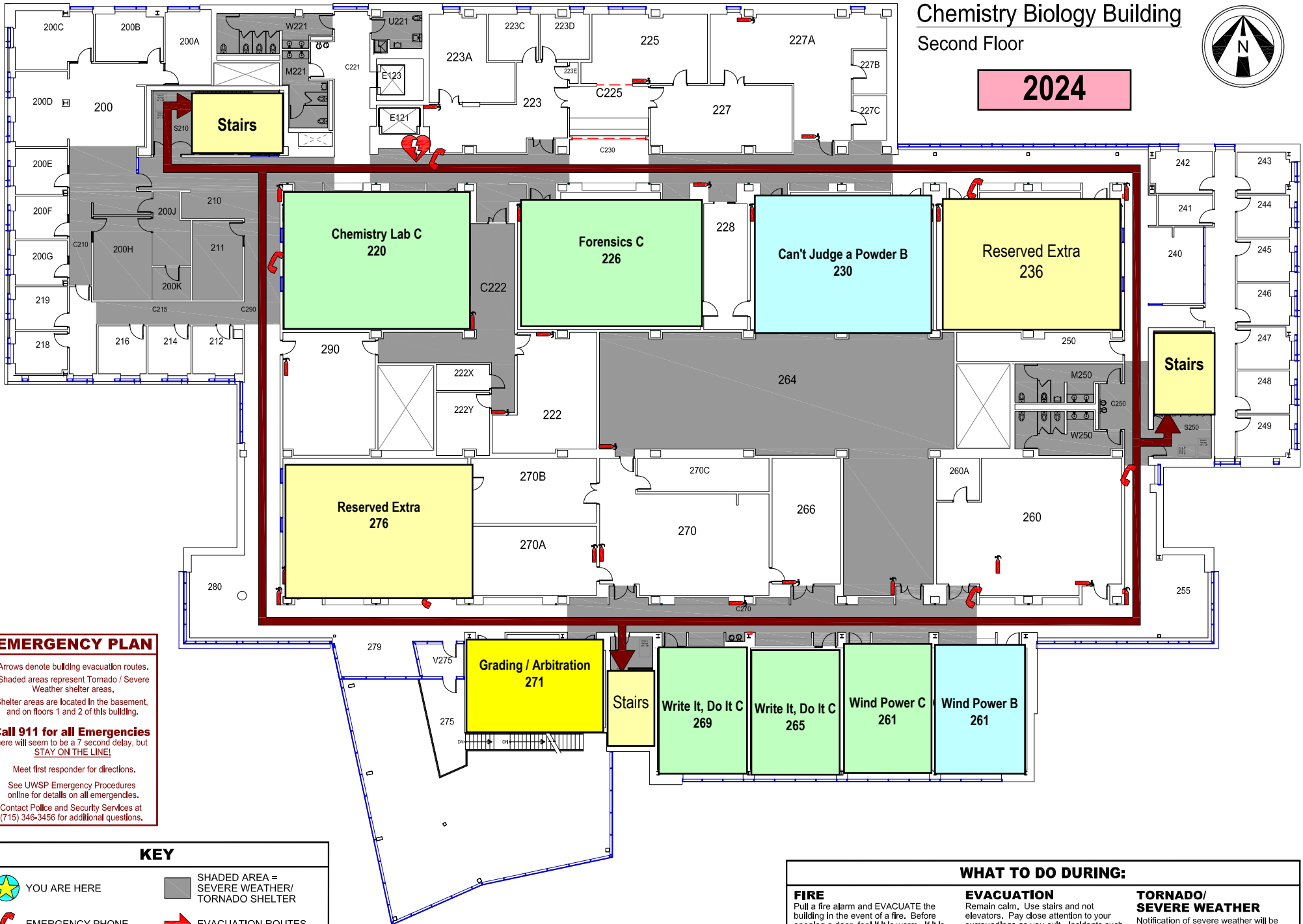


Chemistry Biology Building Second Floor



2024



EMERGENCY PLAN







Arrows denote building evacuation routes. Shaded areas represent Tornado / Severe Weather shelter areas.

Shelter areas are located in the basement, and on floors 1 and 2 of this building.

Call 911 for all Emergencies
There will seem to be a 7 second delay, but **STAY ON THE LINE!**

Meet first responder for directions.
See UWSP Emergency Procedures online for details on all emergencies.
Contact Police and Security Services at (715) 346-3456 for additional questions.

KEY

	YOU ARE HERE		SHADED AREA = SEVERE WEATHER/ TORNADO SHELTER
	EMERGENCY PHONE		EVACUATION ROUTES
	AED		FIRE EXTINGUISHER

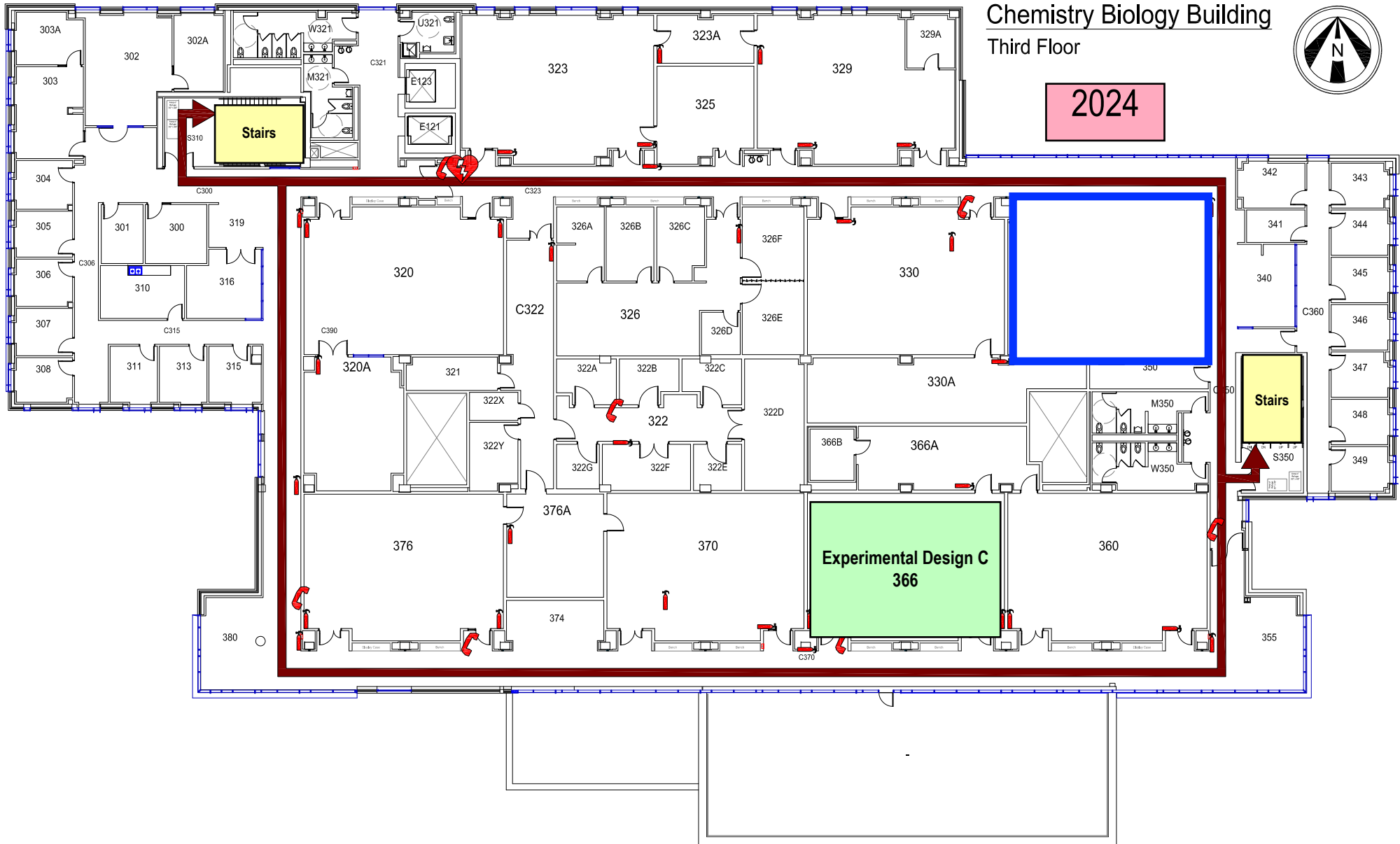
WHAT TO DO DURING:

<p>FIRE Pull a fire alarm and EVACUATE the building in the event of a fire. Before opening a door, feel if it is warm. If it is warm, leave the door closed and find an alternate path. Stay low if you encounter smoke. Stop, drop, and roll should your clothes catch on fire.</p>	<p>EVACUATION Remain calm. Use stairs and not elevators. Pay close attention to your surroundings as you exit. Incidents such as FIRE OF HAZARDOUS MATERIALS RELEASES may require that alternate paths be selected. Stay clear of the building and entry ways after exiting the building in order to facilitate responder access to the emergency.</p>	<p>TORNADO/ SEVERE WEATHER Notification of severe weather will be relayed to the building. If a siren sounds, building occupants should take cover in the lowest safe location available, preferably in an interior room or basement. Remain in your shelter area until tornado warning is expired.</p>
--	--	--

Chemistry Biology Building Third Floor



2024



EMERGENCY PLAN

Arrows denote building evacuation routes.
Shaded areas represent Tornado / Severe Weather shelter areas.

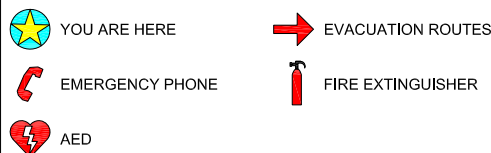
Shelter areas are located in the basement, and on floors 1 and 2 of this building.

Call 911 for all Emergencies
There will seem to be a 7 second delay, but **STAY ON THE LINE!**

Meet first responder for directions.

See UWSP Emergency Procedures online for details on all emergencies.
Contact Police and Security Services at (715) 346-3456 for additional questions.

KEY



Tornado shelter areas located on the Floors 1 and 2.

WHAT TO DO DURING:

FIRE

Pull a fire alarm and **EVACUATE** the building in the event of a fire. Before opening a door, feel if it is warm. If it is warm, leave the door closed and find an alternate path. Stay low if you encounter smoke. Stop, drop, and roll should your clothes catch on fire.

EVACUATION

Remain calm. Use stairs and not elevators. Pay close attention to your surroundings as you exit. Incidents such as **FIRE OF HAZARDOUS MATERIALS RELEASES** may require that alternate paths be selected. Stay clear of the building and entry ways after exiting the building in order to facilitate responder access to the emergency.

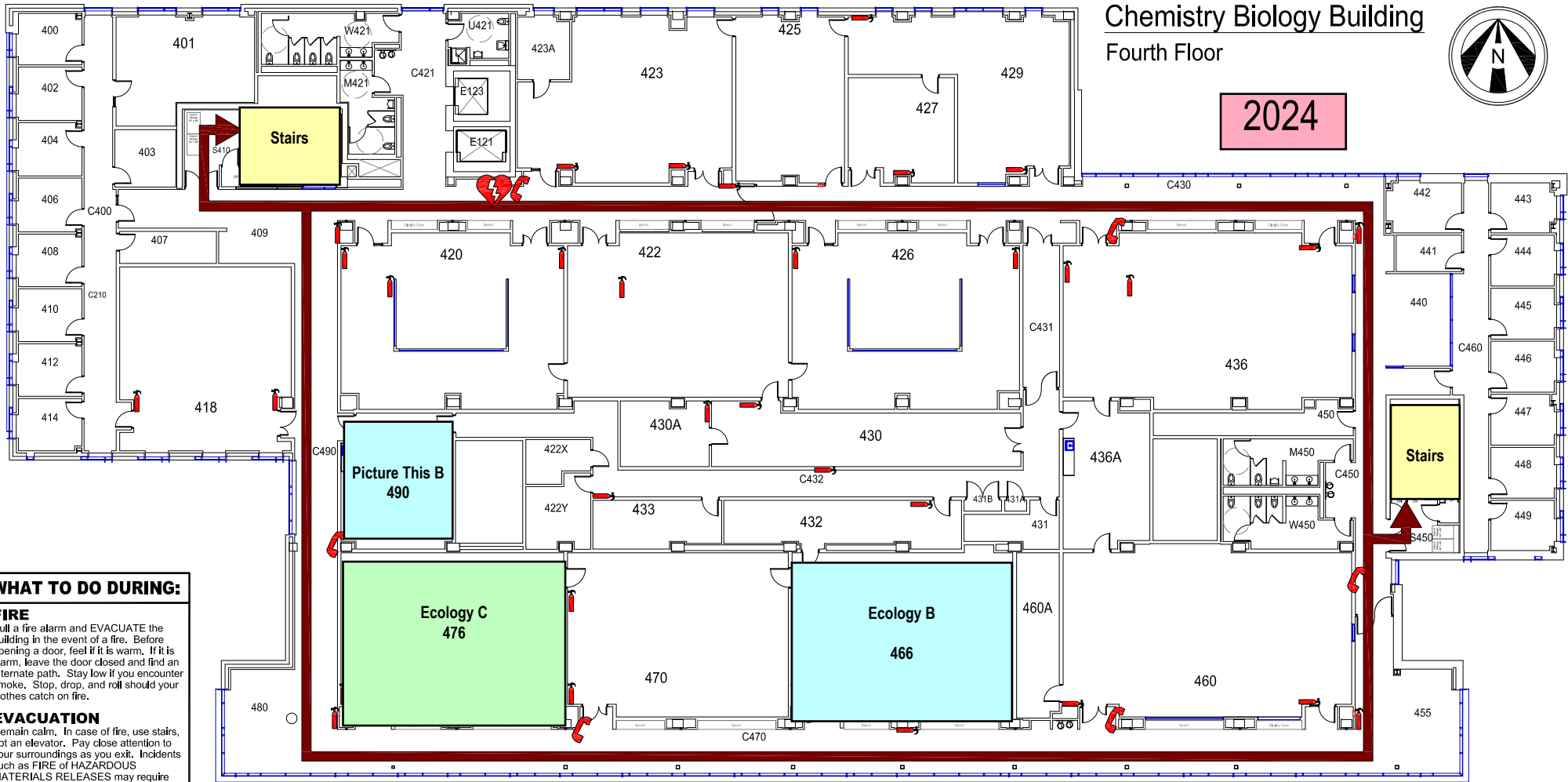
TORNADO/ SEVERE WEATHER

Notification of severe weather will be relayed to the building. If a siren sounds, building occupants should take cover in the lowest safe location available, preferably in an interior room or basement. Remain in your shelter area until tornado warning is expired.

Chemistry Biology Building Fourth Floor



2024



WHAT TO DO DURING:

FIRE
Pull a fire alarm and EVACUATE the building in the event of a fire. Before opening a door, feel if it is warm. If it is warm, leave the door closed and find an alternate path. Stay low if you encounter smoke. Stop, drop, and roll should your clothes catch on fire.

EVACUATION
Remain calm. In case of fire, use stairs, not an elevator. Pay close attention to your surroundings as you exit. Incidents such as FIRE or HAZARDOUS MATERIALS RELEASES may require that alternate paths be selected. Stay clear of the building and entry ways after exiting the building in order to facilitate responder access to the emergency.

**TORNADO/
SEVERE WEATHER**
Take cover in the lowest safe location available, preferably in an interior room or basement. Remain in your shelter area until the tornado warning is expired.

KEY

-  YOU ARE HERE
-  EMERGENCY PHONE
-  AED
-  FIRE EXTINGUISHER
-  EVACUATION ROUTES

EMERGENCY PLAN

Arrows denote building evacuation routes. Shaded areas represent Tornado / Severe Weather shelter areas.

Shelter areas are located in the basement, and on floors 1 and 2 of this building.

Call 911 for all Emergencies
There will seem to be a 7 second delay, but **STAY ON THE LINE!**

Meet first responder for directions.
See UWSP Emergency Procedures online for details on all emergencies.
Contact Police and Security Services at (715) 346-3456 for additional questions.

Tornado shelter areas located on the Floors 1 and 2.

UWSP Emergency Plan

LEE SHERMAN DREYFUS UNIVERSITY CENTER SECOND FLOOR



Arrows Denote Building Evacuation Routes.
Shaded Areas Represent Tornado/Severe Weather Shelter Areas.
Shelter Areas Are Located On Floors 1 and 2 Of This Building.

University of Wisconsin Stevens Point
1015 Reserve Street
Stevens Point, WI

2024

WHAT TO DO DURING:

TORNADO/ SEVERE WEATHER

Notification of severe weather will be relayed to the building. If a siren sounds, building occupants should take cover in the lowest safe location available, preferably in an interior room or basement. Remain in your shelter area until tornado warning is expired.






FIRE

Pull a fire alarm and EVACUATE the building in the event of a fire. Before opening a door, feel if it is warm. If it is warm, leave the door closed and find an alternate path. Stay low if you encounter smoke. Stop, drop, and roll should your clothes catch fire.

EVACUATION

Remain calm. Use stairs and not elevators. Pay close attention to your surroundings as you exit. Incidents such as FIRE or HAZARDOUS MATERIALS RELEASES may require that alternate paths be selected. Stay clear of the building and entry ways after exiting the building in order to facilitate responder access to the emergency.

KEY

-  YOU ARE HERE
-  EMERGENCY PHONE
-  AED (Located on 1st Floor)
-  SHADED AREA = SEVERE WEATHER/ TORNADO SHELTER (Located on 1st and 2nd Floor)
-  EVACUATION ROUTES

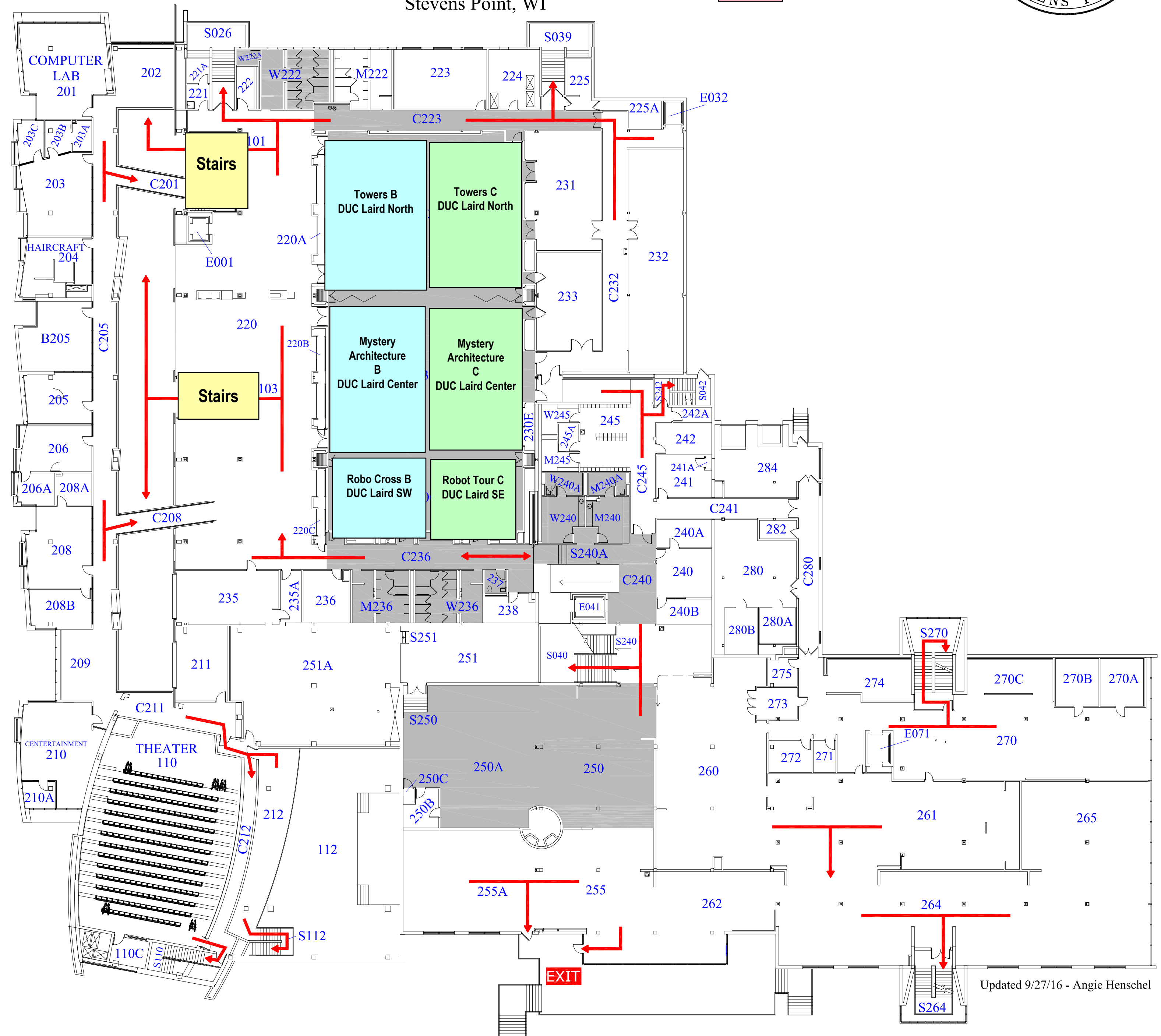
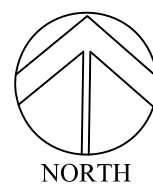
Call 911 for all Emergencies.

There will seem to be a 10 second delay, but STAY ON THE LINE!

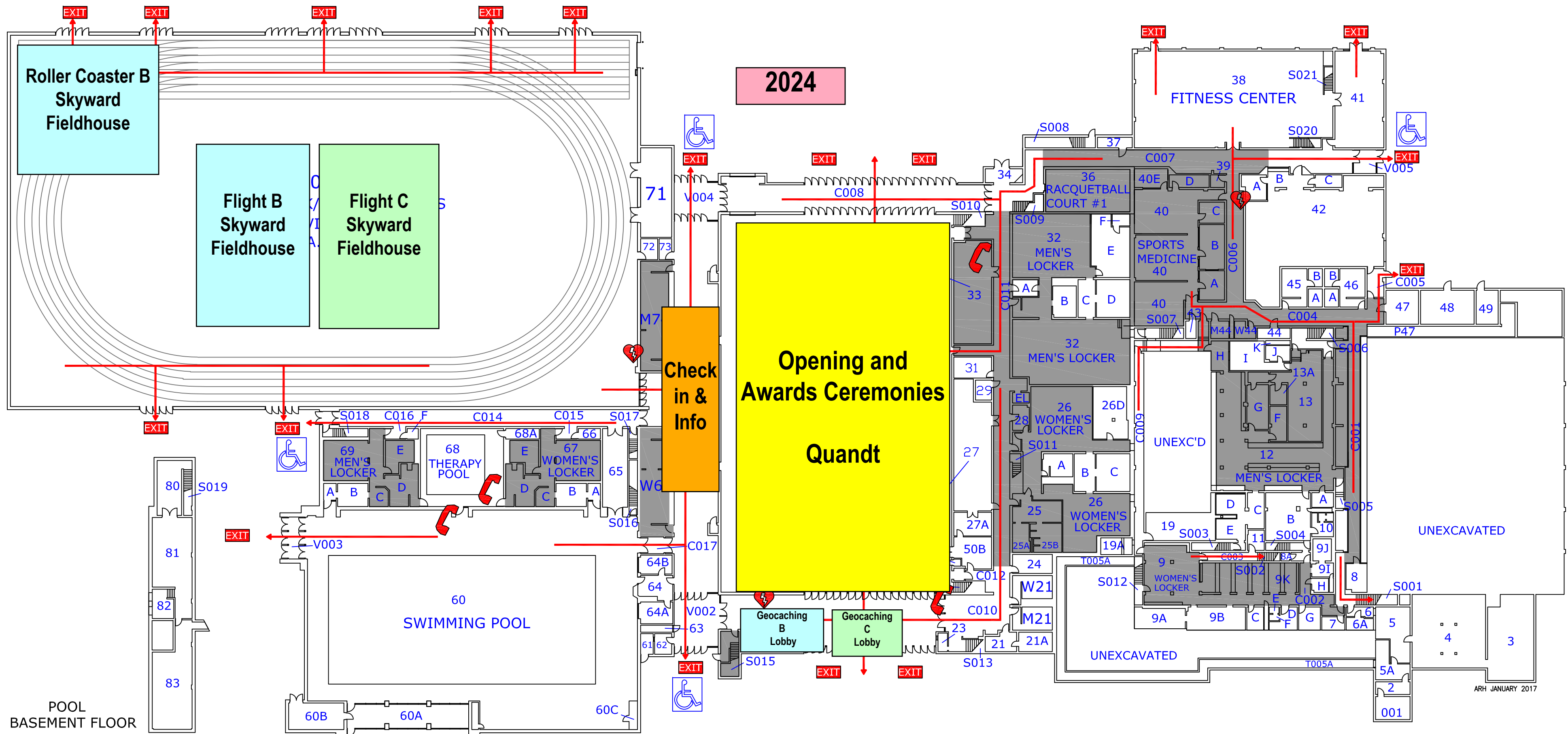
Meet first responder for directions.

See UWSP Emergency Management Plan at <http://www.uwsp.edu/ehs/emp/> for details on all emergencies.

Contact Protective Services at 346-3456 for additional questions.



Updated 9/27/16 - Angie Henschel



HEALTH ENHANCEMENT CENTER GROUND LEVEL

University of Wisconsin Stevens Point
2050 4th Avenue
Stevens Point, WI



UWSP Emergency Plan

Arrows Denote Building Evacuation Routes.

Shaded Areas Represent Tornado/
Severe Weather Shelter Areas.

Shelter Areas Are Located On
Floors 1 and 2 Of This Building.

KEY	
	YOU ARE HERE
	EMERGENCY PHONE
	AED
	SHADED AREA = SEVERE WEATHER/ TORNADO SHELTER
	EVACUATION ROUTES

WHAT TO DO DURING:

TORNADO/ SEVERE WEATHER

Notification of severe weather will be relayed to the building. If a siren sounds, building occupants should take cover in the lowest safe location available, preferably in an interior room or basement. Remain in your shelter area until tornado warning is expired.

FIRE

Pull a fire alarm and EVACUATE the building in the event of a fire. Before opening a door, feel if it is warm. If it is warm, leave the door closed and find an alternate path. Stay low if you encounter smoke. Stop, drop, and roll should your clothes catch fire.

EVACUATION

Remain calm. Use stairs and not elevators. Pay close attention to your surroundings as you exit. Incidents such as FIRE of HAZARDOUS MATERIALS RELEASES may require that alternate paths be selected. Stay clear of the building and entry ways after exiting the building in order to facilitate responder access to the emergency.

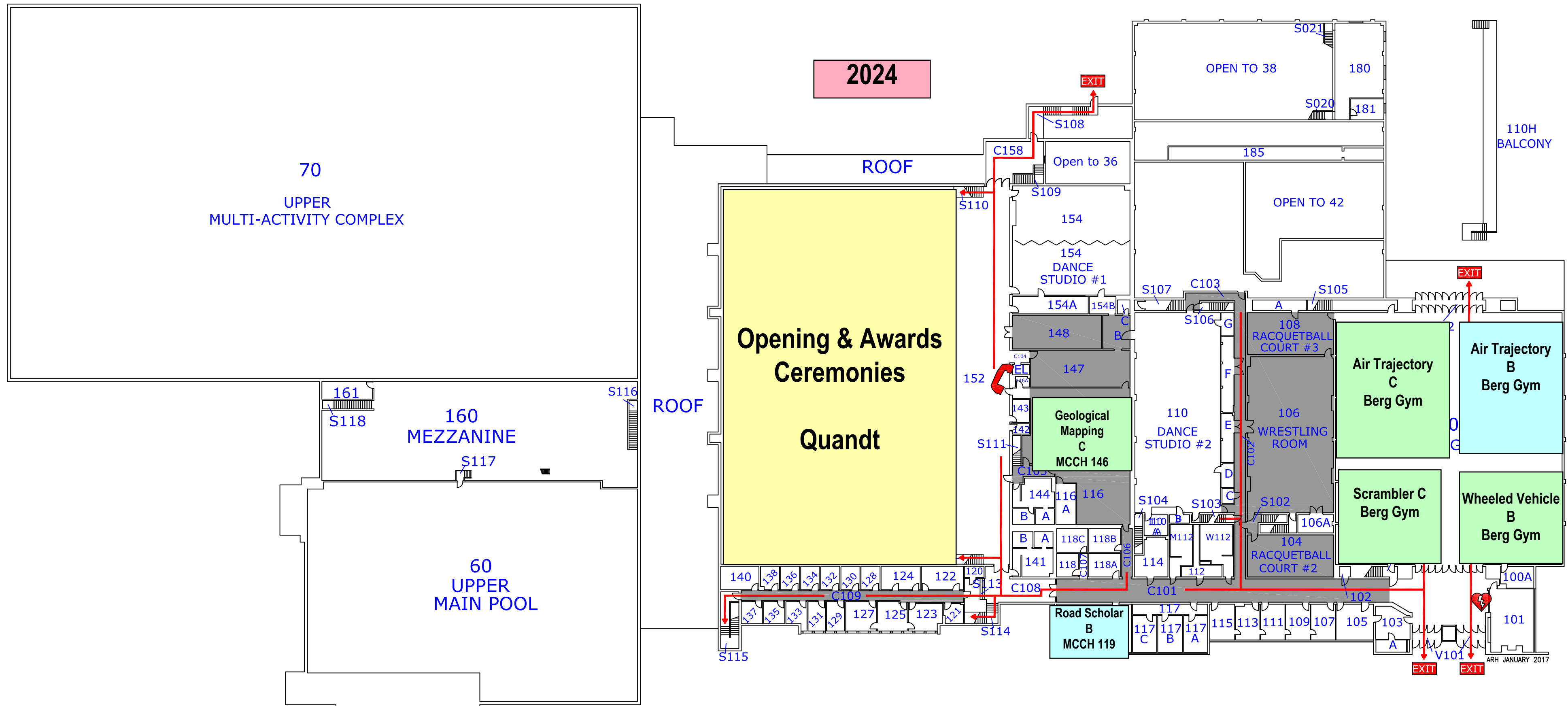
Call 911 for all Emergencies.

There will seem to be a 10 second delay, but **STAY ON THE LINE!**

Meet first responder for directions.

See UWSP Emergency Procedures at <http://www.uwsp.edu/rmgmt> for details on all emergencies.

Contact Protective Services at (715)346-3456 for additional questions.



HEALTH ENHANCEMENT CENTER UPPER LEVEL

University of Wisconsin Stevens Point
2050 4th Avenue
Stevens Point, WI



UWSP Emergency Plan

Arrows Denote Building Evacuation Routes.

Shaded Areas Represent Tornado/
Severe Weather Shelter Areas.

Shelter Areas Are Located On
Floors 1 and 2 Of This Building.

KEY	
	YOU ARE HERE
	EMERGENCY PHONE
	AED
	SHADED AREA = SEVERE WEATHER/TORNADO SHELTER
	EVACUATION ROUTES

WHAT TO DO DURING:

TORNADO/ SEVERE WEATHER

Notification of severe weather will be relayed to the building. If a siren sounds, building occupants should take cover in the lowest safe location available, preferably in an interior room or basement. Remain in your shelter area until tornado warning is expired.

FIRE

Pull a fire alarm and EVACUATE the building in the event of a fire. Before opening a door, feel if it is warm. If it is warm, leave the door closed and find an alternate path. Stay low if you encounter smoke. Stop, drop, and roll should your clothes catch fire.

EVACUATION

Remain calm. Use stairs and not elevators. Pay close attention to your surroundings as you exit. Incidents such as FIRE or HAZARDOUS MATERIALS RELEASES may require that alternate paths be selected. Stay clear of the building and entry ways after exiting the building in order to facilitate responder access to the emergency.

Call 911 for all Emergencies.

There will seem to be a 10 second delay, but **STAY ON THE LINE!**

Meet first responder for directions.

See UWSP Emergency Procedures at <http://www.uwsp.edu/rmgt> for details on all emergencies.

Contact Protective Services at (715) 346-3456 for additional questions.

UWSP Emergency Plan

2024

Arrows Denote Building Evacuation Routes.
 Shaded Areas Represent Tornado/Severe Weather Shelter Areas.
 Shelter Areas Are Located In The Basement And On Floors 1 & 2 Of This Building.







WHAT TO DO DURING:

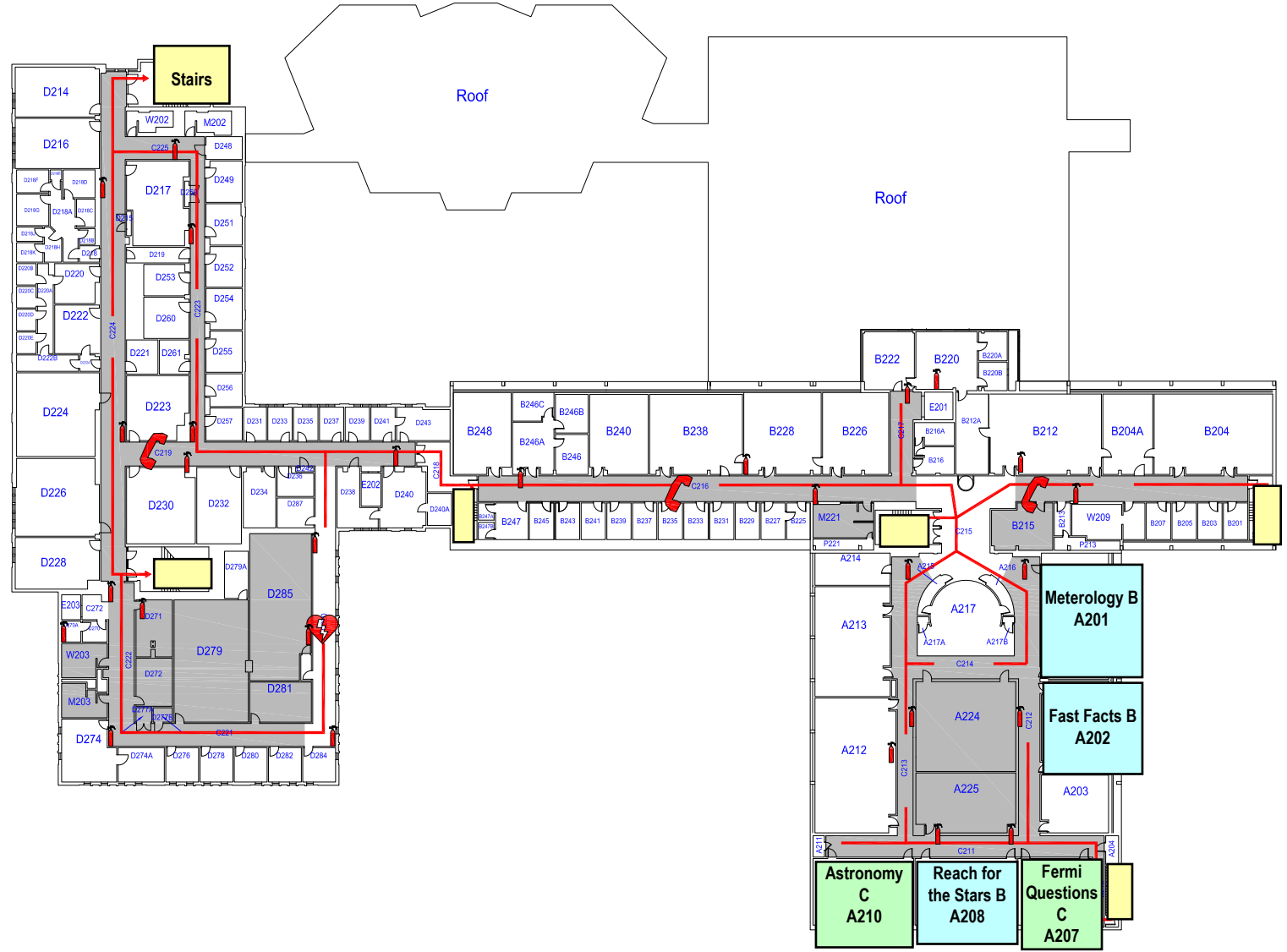
TORNADO/ SEVERE WEATHER
 Notification of severe weather will be relayed to the building. If a siren sounds, building occupants should take cover in the lowest safe location available, preferably in an interior room or basement. Remain in your shelter area until tornado warning is expired.

FIRE
 Pull a fire alarm and EVACUATE the building in the event of a fire. Before opening a door, feel if it is warm. If it is warm, leave the door closed and find an alternate path. Stay low if you encounter smoke. Stop, drop, and roll should your clothes catch fire.

EVACUATION
 Remain calm. Use stairs and not elevators. Pay close attention to your surroundings as you exit. Incidents such as FIRE or HAZARDOUS MATERIALS RELEASES may require that alternate paths be selected. Stay clear of the building and entry ways after exiting the building in order to facilitate responder access to the emergency.

KEY

-  YOU ARE HERE
-  EMERGENCY PHONE
-  AED (Located on 1st Floor)
-  FIRE EXTINGUISHER
-  SEVERE WEATHER/ TORNADO SHELTER
-  EVACUATION ROUTES



Call 911 for all Emergencies.
 There will seem to be a 10 second delay, but **STAY ON THE LINE!**

Meet first responder for directions.

See UWSP Emergency Procedures at <http://www.uwsp.edu/rmgt> for details on all emergencies.

Contact Protective Services at (715)346-3456 with additional questions.



Drawn: Angle Novak
 Date: 07/13/2018
 UWSP Facilities Planning

Science Building Second Floor Emergency Plan

Bldg No: 0006



UWSP Emergency Plan

2024

Arrows Denote Building Evacuation Routes.
 Shaded Areas Represent Tornado/Severe Weather Shelter Areas.
 Shelter Areas Are Located In The Basement And On Floors 1 & 2 Of This Building.







WHAT TO DO DURING:

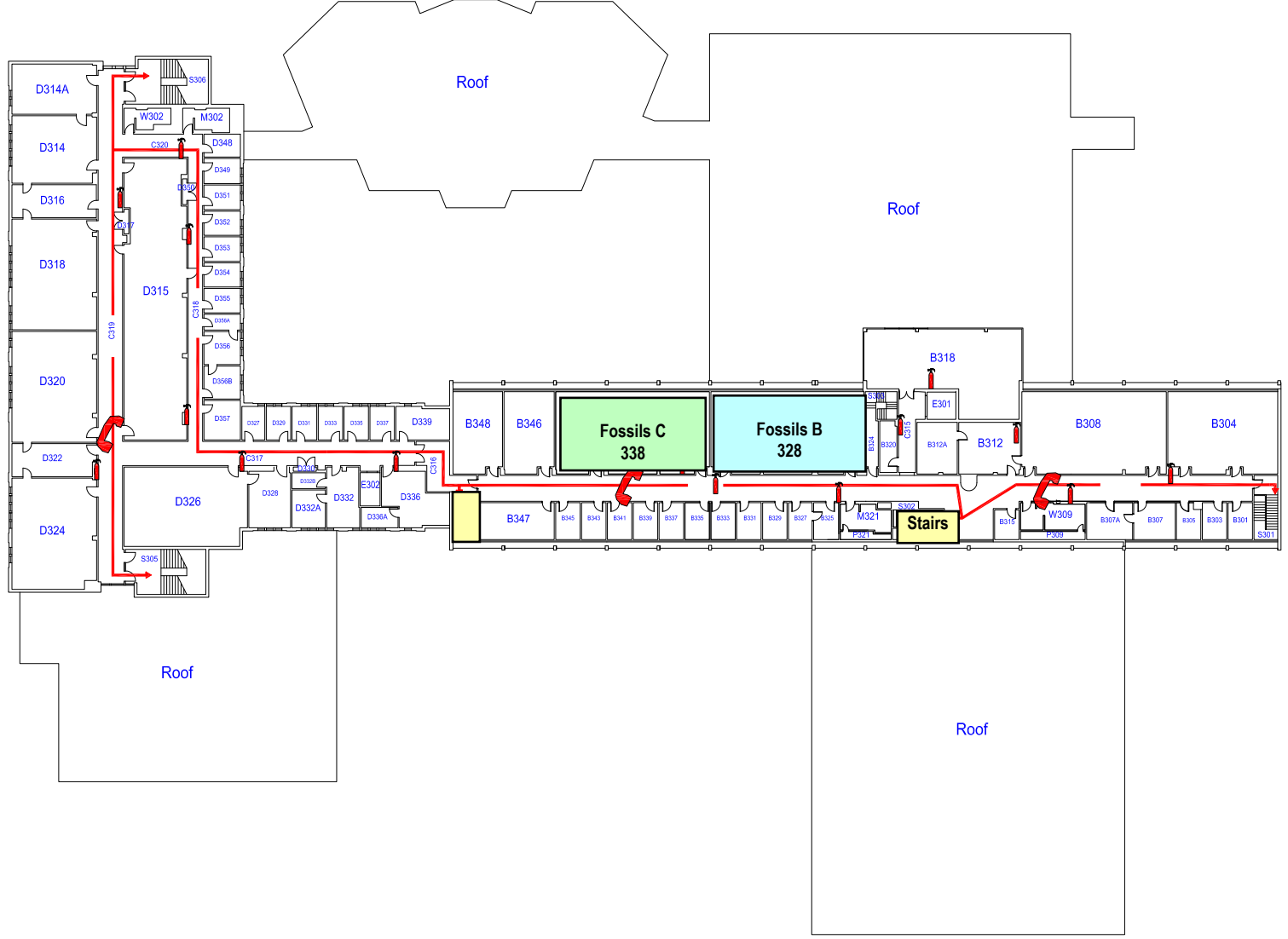
TORNADO/ SEVERE WEATHER
 Notification of severe weather will be relayed to the building. If a siren sounds, building occupants should take cover in the lowest safe location available, preferably in an interior room or basement. Remain in your shelter area until tornado warning is expired.

FIRE
 Pull a fire alarm and EVACUATE the building in the event of a fire. Before opening a door, feel if it is warm. If it is warm, leave the door closed and find an alternate path. Stay low if you encounter smoke. Stop, drop, and roll should your clothes catch fire.

EVACUATION
 Remain calm. Use stairs and not elevators. Pay close attention to your surroundings as you exit. Incidents such as FIRE or HAZARDOUS MATERIALS RELEASES may require that alternate paths be selected. Stay clear of the building and entry ways after exiting the building in order to facilitate responder access to the emergency.

KEY

-  YOU ARE HERE
-  EMERGENCY PHONE
-  AED (Located on 1st Floor)
-  FIRE EXTINGUISHER
-  SEVERE WEATHER/ TORNADO SHELTER
-  EVACUATION ROUTES



Call 911 for all Emergencies.
 There will seem to be a 10 second delay, but **STAY ON THE LINE!**

Meet first responder for directions.

See UWSP Emergency Procedures at <http://www.uwsp.edu/rmgt> for details on all emergencies.

Contact Protective Services at (715)346-3456 with additional questions.



Drawn: Angle Novak
 Date: 07/13/2018
 UWSP Facilities Planning

Science Building Third Floor Emergency Plan

Bldg No: 0006



UWSP Emergency Plan

Arrows Denote Building Evacuation Routes.
 Shaded Areas Represent Tornado/Severe Weather Shelter Areas.
 Shelter Areas Are Located In The Basement And On Floors 1 & 2 Of This Building.

WHAT TO DO DURING:

TORNADO/ SEVERE WEATHER

Notification of severe weather will be relayed to the building. If a siren sounds, building occupants should take cover in the lowest safe location available, preferably in an interior room or basement. Remain in your shelter area until tornado warning is expired.

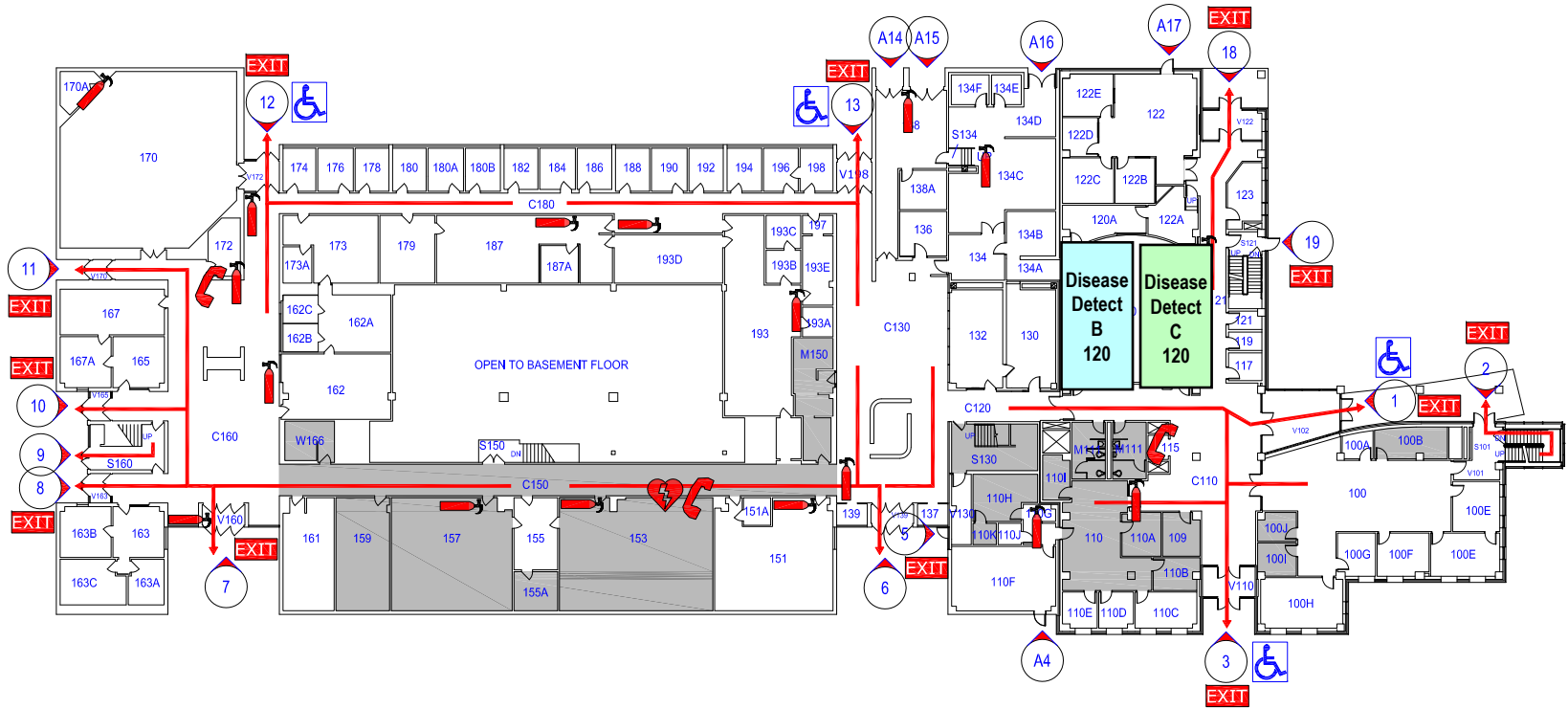
FIRE

Pull a fire alarm and EVACUATE the building in the event of a fire. Before opening a door, feel if it is warm. If it is warm, leave the door closed and find an alternate path. Stay low if you encounter smoke. Stop, drop, and roll should your clothes catch fire.








EVACUATION

Remain calm. Use stairs and not elevators. Pay close attention to your surroundings as you exit. Incidents such as FIRE or HAZARDOUS MATERIALS RELEASES may require that alternate paths be selected. Stay clear of the building and entry ways after exiting the building in order to facilitate responder access to the emergency.

2024



KEY

-  YOU ARE HERE
-  EMERGENCY PHONE
-  AED (Located on 1st and 3rd Floor)
-  FIRE EXTINGUISHER
-  SEVERE WEATHER/
TORNADO SHELTER
-  EVACUATION ROUTES
-  EXTERIOR DOOR NUMBER

Call 911 for all Emergencies.

There will seem to be a 7 second delay, but **STAY ON THE LINE!**

Meet first responder for directions.

See UWSP Emergency Procedures online for details on all emergencies.

Contact Protective Services at (715)346-3456 with additional questions.



Drawn: Angle Novak

Date: 01/22/2019

UWSP Facilities Planning

Trainer Natural Resources Building

First Floor Emergency Plan

Bldg No: 0012



UWSP Emergency Plan

Arrows Denote Building Evacuation Routes.
 Shaded Areas Represent Tornado/Severe Weather Shelter Areas.
 Shelter Areas Are Located In The Basement And On Floors 1 & 2 Of This Building.

WHAT TO DO DURING:

TORNADO/ SEVERE WEATHER

Notification of severe weather will be relayed to the building. If a siren sounds, building occupants should take cover in the lowest safe location available, preferably in an interior room or basement. Remain in your shelter area until tornado warning is expired.

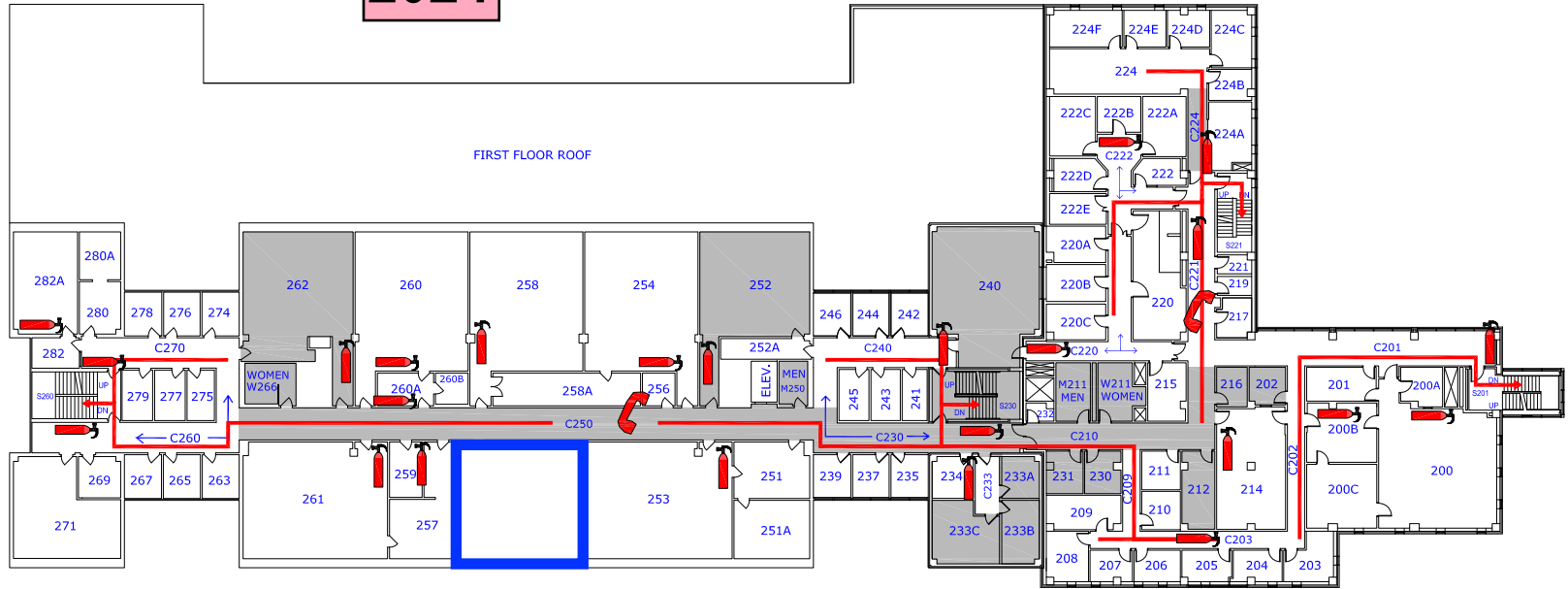
FIRE

Pull a fire alarm and EVACUATE the building in the event of a fire. Before opening a door, feel if it is warm. If it is warm, leave the door closed and find an alternate path. Stay low if you encounter smoke. Stop, drop, and roll should your clothes catch fire.

EVACUATION

Remain calm. Use stairs and not elevators. Pay close attention to your surroundings as you exit. Incidents such as FIRE or HAZARDOUS MATERIALS RELEASES may require that alternate paths be selected. Stay clear of the building and entry ways after exiting the building in order to facilitate responder access to the emergency.

2024



KEY

- YOU ARE HERE
- EMERGENCY PHONE
- AED (Located on 1st and 3rd Floor)
- FIRE EXTINGUISHER
- SEVERE WEATHER/
TORNADO SHELTER
- EVACUATION ROUTES

Call 911 for all Emergencies.
 There will seem to be a 7 second delay, but **STAY ON THE LINE!**

Meet first responder for directions.

See UWSP Emergency Procedures online for details on all emergencies.

Contact Protective Services at (715)346-3456 with additional questions.



Drawn: Angle Novak
 Date: 01/22/2019

UWSP Facilities Planning

Trainer Natural Resources Building

Second Floor Emergency Plan

Bldg No: 0012



UWSP Emergency Plan

Arrows Denote Building Evacuation Routes.
 Shaded Areas Represent Tornado/Severe Weather Shelter Areas.
 Shelter Areas Are Located In The Basement And On Floors 1 & 2 Of This Building.

WHAT TO DO DURING:

TORNADO/ SEVERE WEATHER

Notification of severe weather will be relayed to the building. If a siren sounds, building occupants should take cover in the lowest safe location available, preferably in an interior room or basement. Remain in your shelter area until tornado warning is expired.







FIRE

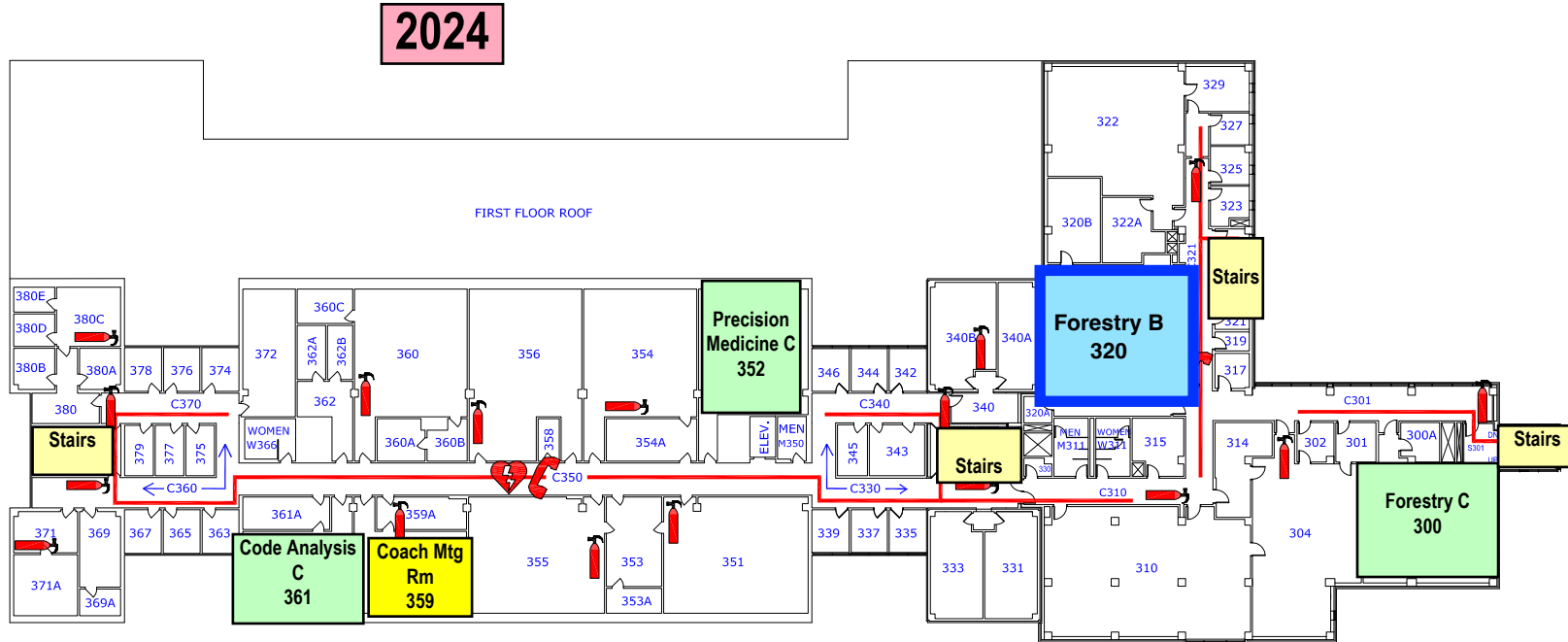
Pull a fire alarm and EVACUATE the building in the event of a fire. Before opening a door, feel if it is warm. If it is warm, leave the door closed and find an alternate path. Stay low if you encounter smoke. Stop, drop, and roll should your clothes catch fire.

EVACUATION

Remain calm. Use stairs and not elevators. Pay close attention to your surroundings as you exit. Incidents such as FIRE or HAZARDOUS MATERIALS RELEASES may require that alternate paths be selected. Stay clear of the building and entry ways after exiting the building in order to facilitate responder access to the emergency.

KEY

-  YOU ARE HERE
-  EMERGENCY PHONE
-  AED (Located on 1st and 3rd Floor)
-  FIRE EXTINGUISHER
-  SEVERE WEATHER/
TORNADO SHELTER
-  EVACUATION ROUTES



Call 911 for all Emergencies.

There will seem to be a 7 second delay, but **STAY ON THE LINE!**

Meet first responder for directions.

See UWSP Emergency Procedures online for details on all emergencies.

Contact Protective Services at (715)346-3456 with additional questions.



Drawn: Angle Novak

Date: 01/22/2019

UWSP Facilities Planning

Trainer Natural Resources Building

Third Floor Emergency Plan

Bldg No: 0012

